

Awards & Recognition for June, 2008

#1 SALES ASSOCIATE



Debbie Depper
Crown Point

RUNNER-UP SALES ASSOCIATE



Suchita Shah
Highland

#1 LISTING ASSOCIATE



Bernie Taylor
Crown Point

TOP OFFICES

DIVISION 1 - Crown Point, Highland, **Schererville**, Merrillville, Valparaiso

DIVISION 2 - **Chesterton**, DeMotte, Portage

DIVISION 3 - Beecher, Bourbonnais, **Crete**, Lowell, Tinley Park, Winfield, Shorewood

#1 Offices for June

SCHERERVILLE (residential) Listing Units **63**

SCHERERVILLE Listing Volume **\$14,920,823**

CROWN POINT Sales Units **80** **CROWN POINT** Sales Volume **\$12,188,975**

MEDALLION WINNERS

1 st Cynthia Bogdan	5 th Audrey Matt	10 th Pat Hawrot	20 th Judy Grady
Meghan Noonan	Nick Naumoff		
Clarence Webb	6 th Mary Caliban	11 th Jeanette Bencze	22 nd Linda Branson
		Kathie Dinga	Sandy Koehler
2 nd Linda Kokesh	7 th Cheryl Bonin	Pamela Perkins	26 th Jan Thomas
Mary Stang	Frank Montanez	Azza Tawfik	40 th Sharon Plassman
	6 th 7 th Debbie Depper	12 th Michelle Bagull	48 th Edie Cothran
4 th Laura Dudley	8 th Steve Kroczek	14 th Donna Anthony	Suchita Shah
Jackie Kostovska	Candee Warren	16 th Maureen Miller	67 th Mary Jane DiMichele
5 th Nancy Camacho-Esqueda	9 th Eloise Blackmon	22 nd Cyndi Vander Giessen	81 st John and Pam Reipsa
Annette Furto	Kathy Camp	25 th Mary Ann Shurman	Bernie Taylor
Scott LaMantia	Milt Moyer		

JUNE Portraits of Success

BEECHER

LISTING



Joanne Sebben

SALES



Michelle Boicken

	OFFICE PRODUCTION	
Listing Units	8	Sales Units 0
Listing Volume	1,453,100	Sales Volume 0

BOURBONNAIS

LISTING



Emily Lundmark

SALES



The K Team

	OFFICE PRODUCTION	
Listing Units	7	Sales Units 9
Listing Volume	1,324,200	Sales Volume 1,814,900

CHESTERTON

LISTING



Debbie Lightfoot

SALES



Cheryl Bonin

	OFFICE PRODUCTION	
Listing Units	18	Sales Units 21
Listing Volume	5,386,200	Sales Volume 4,105,504

CRETE

LISTING & SALES



Donna Anthony

	OFFICE PRODUCTION	
Listing Units	11	Sales Units 10
Listing Volume	1,676,100	Sales Volume 1,292,390

CROWN POINT

LISTING



Bernie Taylor

SALES



Debbie Depper

	OFFICE PRODUCTION	
Listing Units	68	Sales Units 80
Listing Volume	11,294,089	Sales Volume 12,188,975

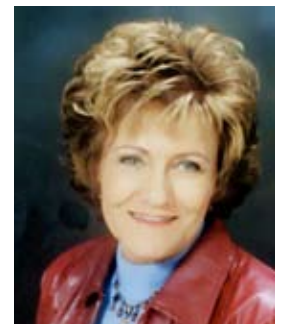
DEMOTTE

LISTING



**Joan Majerik and
Linda White**

SALES



Joyce Martin

	OFFICE PRODUCTION	
Listing Units	22	Sales Units 14
Listing Volume	5,178,100	Sales Volume 2,354,700

JUNE Portraits of Success

HIGHLAND

LISTING



Karen Stein

Listing Units 39
Listing Volume 6,728,710

SALES



Suchita Shah

Sales Units 46
Sales Volume 8,822,974

OFFICE PRODUCTION

LOWELL

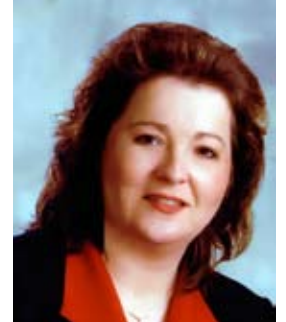
LISTING



**Helga Cannon/
Diana Lauth**

Listing Units 22
Listing Volume 6,059,700

SALES



Geri Norfleet

Sales Units 17
Sales Volume 3,047,100

OFFICE PRODUCTION

PORTAGE

LISTING



Eve Brown-Ginn

Listing Units 8
Listing Volume 1,677,200

SALES



Scott LaMantia

Sales Units 25
Sales Volume 2,616,850

OFFICE PRODUCTION

SCHERERVILLE

LISTING



Pat Hill and Nicole Kelly

Listing Units 68
Listing Volume 14,920,823

SALES



Steve Kroczek

Sales Units 62
Sales Volume 12,047,697

OFFICE PRODUCTION

SHOREWOOD

LISTING



Denise Schroeck

Listing Units 3
Listing Volume 482,900

SALES



Maria Holmes

Sales Units 0
Sales Volume 0

OFFICE PRODUCTION

TINLEY PARK

LISTING & SALES



Kelly Ryan

Listing Units 23
Listing Volume 6,483,300

Sales Units 22
Sales Volume 3,660,500

OFFICE PRODUCTION

JUNE Portraits of Success

VALPARAISO

LISTING



Sheryl Barnard

Listing Units 31
Listing Volume 5,126,299

SALES



Deanna Borisenko

Sales Units 24
Sales Volume 4,338,300

OFFICE PRODUCTION

WINFIELD

LISTING & SALES



Robin Venturin Sturgeon

Listing Units 19
Listing Volume 6,282,600



Jim Quirk

Sales Units 19
Sales Volume 3,623,700

OFFICE PRODUCTION



COMPANY TOTALS

LISTING UNITS: **347**

SALES UNITS: **349**

LISTING VOLUME: **\$74,073,321**

SALES VOLUME: **\$59,913,590**

Written Sales for previous month: Sales Associates with \$1,000,000+ in Sales

Jan Thomas - Chesterton
Suchita Shah - Highland
Elaine Eich - Schererville

Mary Stang - Schererville
Diane Trippeer - Schererville
Kelly Rinker and Scott Eriks - Winfield

Written Sales for previous month: Sales Associates with \$750,000 to \$1,000,000 in Sales

Azza Tawfik - Bourbonnais
Bob Calabrese and Kristi Davids - Crown Point
Ruth Lockhart - Crown Point
Bernie Taylor - Crown Point

Kathy Camp - Highland
Nina Borom - Schererville
Kim Seitzinger - Schererville
Deanna Borisenko - Valparaiso

Written Sales for previous month: Sales Associates with 5 or more Commission legs and/or \$350,000 to \$750,000 in Sales

Bob Turco - Bourbonnais

Michelle Gilbertsen - Chesterton

Carlos Lemus - Chesterton

Debbie Lightfoot - Chesterton

Dan Ferguson - Crown Point

Doris Fesi - Crown Point

Sue Herrmann - Crown Point

Phyllis Maruszczak - Crown Point

Arlene Olenik-Lowe - Crown Point

Sharon Plassmann - Crown Point

Meera Tejuja - Crown Point

Mike Toth - Crown Point

Melissa Capellari - DeMotte

Maria Becerra - Highland

Mike and Edie Boudreau - Highland

Javier Chavez - Highland

Mary Jane DiMichele - Highland

Rochelle Massacavollo - Highland

Pattijo Porter - Highland

Annette Wade - Highland

Rich and Maria Todd - Lowell

India Castaneda - Schererville

Diane Cline - Schererville

Nick Naumoff - Schererville

John and Pam Reipsa - Schererville

Ellen Brueggemann - Tinley Park

Sandra Rodriguez - Tinley Park

Kelly Ryan - Tinley Park

Steve Golub - Valparaiso

Diane Kalmbach - Valparaiso

Karen Maynard - Valparaiso

Kendra Simon - Valparaiso

Paula Casanova - Winfield

Scott Eriks and Kelly Rinker - Winfield

Terry Papp, Jr. - Winfield

Jim Quirk - Winfield

Listing Volume for previous month: Sales Associates with 5 or more Listings and/or over \$350,000 in Listing Volume

Jackie Graniczny - Beecher

Jerri Kahney - Beecher

Joanne Sebben - Beecher

Emily Lundmark - Bourbonnais

Cheryl Bonin - Chesterton

Bob and Candy Crone - Chesterton

Debbie Lightfoot - Chesterton

Judi Posiadlik - Chesterton

Donna Anthony - Crete

Bob Calabrese and Kristi Davids -

Crown Point

Nancy Frigo Team - Crown Point

Sue Herrmann - Crown Point

Sharon Plassmann - Crown Point

Don Ready and

Jeff Sunny - Crown Point

Bernie Taylor - Crown Point

Meera Tejuja - Crown Point

Melissa Capellari - Demotte

Dory Lovely - Demotte

Joan Majerik and Linda White - Demotte

Kay Blissmer - Highland

Gary Immig - Highland

Karen Stein - Highland

Cyndy VanderGiessen - Highland

Lisa Zieminski - Highland

Helga Cannon and Diana Lauth - Lowell

Marie Fry - Lowell

Myra Harris - Lowell

Eve Brown-Ginn - Portage

Brandi Chacon - Schererville

Diane Cline - Schererville

Cindi Corbin - Schererville

Edie Cothran - Schererville

Elaine Eich - Schererville

Steve Kroczeck - Schererville

Christine Lepore - Schererville

Dan Spitale - Schererville

Mary Stang - Schererville

Diane Trippeer - Schererville

Julie Banasiak/Bill Gename - Tinley Park

Kelly Ryan - Tinley Park

Sue Sullivan - Tinley Park

Cynthia Valles - Tinley Park

Sheryl Barnard - Valparaiso

Jeff Blade - Valparaiso

Steve Golub - Valparaiso

Tena Krauleidis - Valparaiso

Karen Maynard - Valparaiso

Paula Casanova - Winfield

Jim Quirk - Winfield

Wendy V - Winfield

Robin Venturin Sturgeon - Winfield

Kelly Rinker and Scott Eriks - Winfield

Transferred Associates from other Companies

Joseph Jurek, Jr. to Highland from McColly Referrals, Inc.

David Gilliam to Highland from Re/Max

Jennifer Dreggors to Lowell from Langen Realty

Michele Brandon to Schererville from Re/Max 2000

Robin Sturgeon to Winfield from C-21 Alliance

TOP IN REFERRALS

Top Referral Office in Dollar Volume • Schererville

Top Referral Office in Units • Schererville

Top Referral Sales Associate in Dollar Volume • Judy Grady

Top Referral Sales Associate in Units • Judy Grady

Newly Licensed Associates

Ann Werkman - Bourbonnais

Tiffany Parpart - Bourbonnais

Errica Weatherspoon - Crete

Nicole Wedel - Highland

Jen Crist-Adams - Highland

Tami Bultema - Highland

Kathy Witvoet - Lowell

Jacqueline Hoover - Lowell

Tiffany Spears - Portage

Diane Rogers - Portage

Jenny McCarter - Schererville

Mike Salman - Tinley Park

Hazel Shepherd - Tinley Park

Kimberly Parpart - Tinley Park

Margy Boyce - Valparaiso

Portraits of Success COMPANY ESTABLISHED GOALS for the month.

BEECHER

Joanne Sebben

CHESTERTON

Carlos Lemus, Debbie Lightfoot, Judi Posiadlik

CROWN POINT

Bob Calabrese and Kristi Davids, Doris Fesi, Nancy Frigo Team, Sue Herrmann, Ruth Lockhart
Sharon Plassmann, Don Ready and Jeff Sunny, Bernie Taylor, Meera Tejuja

DEMOTTE

Melissa Capellari

HIGHLAND

Annette Wade

LOWELL

Myra Harris

PORTAGE

Scott LaMantia

SCHERERVILLE

Diane Cline, Edie Cothran, Elaine Elch, Pat Hill and Nicole Kelly, Steve Kroczek
Nick Naumoff, Dan Spitale, Mary Stang, Diane Trippeer

TINLEY PARK

Kelly Ryan

VALPARAISO

Sheryl Barnard, Deanna Borisenko, Tom Feeney, Steve Golub, George Kepchar, Sr.
Tena Krauleidis, Larry Malinowski, Karen Maynard, Christine McDaniel, Kendra Simon

WINFIELD

Paula Casanova, Scott Eriks and Kelly Rinker, Jim Quirk, Robin Venturin Sturgeon